

## PALAMIX®

### HIGH QUALITY CEMENT - NOW WITH MORE FLEXIBILITY AND COMFORT

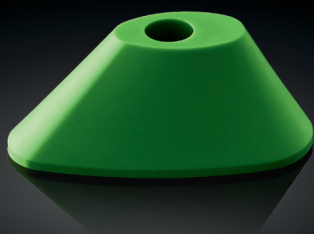


#### SPATULA CLIP – NEW TO PALAMIX®

- Applies a thin layer of bone cement for use in TKA
- Adjustable tip clips onto our short nozzle, and can be directed to any angle for optimal cement application

#### SHORT NOZZLE - NOW GREEN

- For targeted bone cement application in TKA
- New green color for increased visibility (the nozzle is still transparent, and material is unchanged)

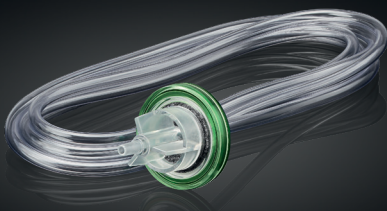


#### FEMORAL PRESSURIZER - NOW SOFTER

- For bone cement pressurization in TKA
- Softer material allows for more individual adaption to the femoral bone opening

#### VACUUM HOSE SET - NEW DESIGN

- Simplified design without a vacuum indicator
- Houses an effective, sterile active-charcoal filter for staff safety



Look for the yellow sticker on our new optimized PALAMIX® system.

For more information, visit [www.heraeus-medical-usa.com](http://www.heraeus-medical-usa.com) or call 1.833.PALACOS.